

10 Day
Money

Back

Guarantee

*25% restock Fee if returned after trial period

Put one to the test call

877-224-1447

www.dropyourenergybill.com



**PUT IT
TO THE
TEST!!**



10 Freshen Outdoor Gear & RV's

(Purifier-High / Fan-High)

Introduction

The **10 MIRACLES TO PERFORM** in this pamphlet are designed to demonstrate immediate results and help expedite the purify-ing process in your home.

It is not necessary to do any of the processes in this booklet but it is recommended that you try some of these Miracles first before you leave the purifier in it's everyday "home" place. These steps can provide amazing results and well worth recommending to family and friends!

This booklet also contains some everyday "miracles" that will enable you to maximize its use and better appreciate the product.

Please note that with everyday "normal" use, the purifier should run at a moderate Square Feet setting. It should be located on the highest piece of furniture in your main living area. Be sure to check out the instruction booklet for these settings.

This step will purify your musty seasonal clothing, tent and camping gear; as well as RV's. Perform this step if you want to help protect them from problem odors and serious damage from mold and mildew while in storage; A must-do step before and after storage of your seasonal gear and Camper. THIS IS ALSO GREAT FOR BOATS (especially with cuddy cabins)! Have you ever taken the cover off your boat and been blown away by the musty smells?

Note: If you are allergic to the OUTDOOR POLLEN and MOLD that finds its way in the RV or camper at night, or you are an avid camper, consider investing in a second Fresco Unit for the road. Remember when mold oxidizes it smells like Chlorine. Wait for that after "thunderstorm" fresh air smell before removing the unit (or turning it down).

- Allow this setup to run for 1/2 to 4 hours. Let your nose be the judge.
- Turn the Purifier "On" with the fan set to "Medium". Turn the Square Feet setting to the maximum.
- For RV, CAMPERS, TENTS and BOATS place the unit in the unoccupied space. Make sure there is a small window or a crack open for ventilation. Leave purifier in the unit for 2 to 24 hours depending on the severity of the mold problem.
- Place items opened or hung -up in front of the Fresco machine in a small space such as a closet or storage unit. Or lay the gear out on the floor tented with a sheet leaving the back of the Fresco unit open for ventilation (See Bedroom Section)



Rate your Results!

"1" means no improvement and "10" means problems ELIMINATED. N/ A means you skipped process.

1 2 3 4 5 6 7 8 9 10 N/A
Comments:

#9 Car Freshening

(Purifier-High / Fan-High)

This step can help you reduce or eliminate that stale smell your car can get as it ages, as well as help eliminate the hazardous fumes in a new car or those from a smoker or a pet passenger. This is another powerful demonstration of the ability of your Fresco. This is a single treatment that can be repeated again and again as fumes build up.

- Place your Fresco on the front seat of your car.
- Make sure the back of your Purifier is clear so you maintain good air-flow through the machine.
- Open one of the windows on each side of the vehicle about 1 inch to allow fresh air in to your Purifier.
- Turn your Purifier "On" with the Fan set on "High". Set the Square Feet dial to the maximum.
- Watch the cord as you close the door or put it through the window.
- Allow this set up to run up to 2 hours or longer depending on the odor level. Your nose will know when it is done.

Note: You may also turn your car ignition to the "On" position and turn your car's heating / cooling ventilation Fan to "On". This will help to clear odors out of the system.



Rate your Results!

"1" means no improvement and "10" means problems ELIMINATED. N/ A means you skipped process.

1 2 3 4 5 6 7 8 9 10 N/A

Comments:

Everyday Miracle

Fresco significantly reduces:

Mold
Mildew
Bacteria
Smoking Odors
Cooking Odors
Stale Odors
Chemical Gases
Dust

1. Kitchen smell a little "fishy" after cooking fish or other foods?
Turn the purifier "On" with the fan on "Medium". Set the Square Feet dial at the upper end of the range. (In usually 1/2 hr. to 1 hr. no one will ever know you had fish for dinner)
2. Cigarette smoking make the home or office smell "Smokey and Stale"?
Turn the purifier "On" with the fan on "Medium". Set the Square Feet dial to the upper end of the range.
3. Athletic Shoes **smell "P U Pew"**? **DON'T THROW THEM OUT!** Fresco them out!

Watch it work for you!

10 Miracles That You Can Perform!

Miracle #1

Heating n-Cooling Clean Up!

Miracle #2

Breathing Easy in the Bedroom

Miracle #3

Mold Blast the Basement!

Miracle #4

Flush Your Bathroom!

Miracle #5

Spring Clean the Closet!

Miracle #6

Hammer Remodeling Fumes!

Miracle #7

Tame Pet Odors!

Miracle #8

Clear-Out Dry Cleaning Toxins!

Miracle #9

Car Freshening!

Miracle #10

Freshen Outdoor Gear a RV's

8 Clear Out Dry Cleaning Toxins

(Purifier-High / Fan-High)

This procedure can help reduce and eliminate that annoying, toxic residue and odor left behind in your clothing by the dry cleaners.

- Remove any plastic or paper wrap, and hang the clothing in a small space such as a closet or bathroom.
- Place your Purifier about 5 to 6 feet above the floor and preferably blowing directly on the clothing to be "bathed."
- Turn your Purifier "On" with the Fan set on "High". Turn the Square Feet to the maximum setting.
- Make sure the back of your Purifier is clear and watch the cord as you close the door.
- Allow this setup to run for up to 2 hours depending on how your clothes smell. Let your nose be the judge.



Rate your Results!

"1" means no improvement and "10" means problems ELIMINATED. N/ A means you skipped process.

1 2 3 4 5 6 7 8 9 10 N/A

Comments:

7 Tame Pet Odors

(Purifier-High / Fan-High)

This step can help you reduce or eliminate the smell that our loving pets sometimes leave for us to deal with. This step can provide amazing results and is worth recommending to friends with pet odor problems. If you need to treat a whole room, follow the steps in "Purify your basement."

- Place your Purifier in front of and facing the problem spot directly on the floor.
- Turn your Purifier "On" with the Fan set on "High". Turn the Square Feet to the maximum setting.
- Make sure the back of the Purifier is clear, to allow for good airflow.
- Allow this set up to run for 2 to 24 hours, or longer, depending on the smell. Let your nose be the judge.

Note: To purify a particularly SMELLY SPOT on the carpet.. Cover the Purifier and the "spot" with a light sheet creating the "tent" effect as we did with your bedding. Remember to leave the back of the purifier open for air flow.



Rate your Results!

"1" means no improvement and "10" means problems ELIMINATED. N/ A means you skipped process.

1 2 3 4 5 6 7 8 9 10 N/A

Comments:

"An Ounce of Prevention Is Worth a Pound of Cure"

The Fresco can deliver both - an ounce of prevention and a pound of cure.

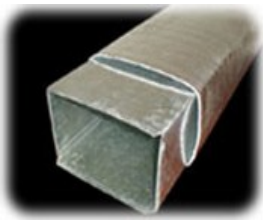
THREE RULES to REMEMBER

- Experiment! Your Purifier is portable so move it around. Get the most out of your Fresco! Put it through the paces and enjoy the benefits.
- Be considerate. Some people are sensitive to the smell of the Activated Oxygen. That's O.K, because most people eventually grow accustomed to it. Keep in mind that once you "sanitize /bathe" your entire home with nature's cleaning elements, only an undetectable, low level amount of O3 is necessary to maintain a normal level of purity.
- **ALWAYS** keep the back of the purifier open and clear to draw in air.

1 Heating-n-Cooling Clean Up! (Purifier-High / Fan-Low)

This step takes the most time and is the most beneficial to you. Purifying your heating, cooling and ventilation system could alone pay for your Fresco purifier. It can cost hundreds of dollars to have your home ventilation ductwork cleaned out and chemically treated to help prevent infection and breathing disorders. This step can be very helpful as a preventative measure and is worth recommending to friends and family! Your Fresco purifier can help keep the ventilation system in your house 'spic-n-span' by periodically repeating this step.

- Just place your unit directly in front of and directly facing a return air duct or intake of your ventilation system.
- Turn your purifier "On" with the fan on a "Low" to "Medium" setting. Set the Square Feet dial on the unit to the maximum setting.
- Next go to your thermostat and turn your Heating/ Cooling system Fan to "On" for continuous operation.
- Allow the setup to run at least 2 hours after you smell the Activated Oxygen coming out the vents farthest away from the central air / fan unit. This normally takes about 2 to 5 hours. Better still, you can let it run this way all day while you're away. If you do leave it on all day, open all your closet doors to freshen them up at the same time.



Rate your Results!

"1" means no improvement and "10" means problems ELIMINATED. N/ A means you skipped process.

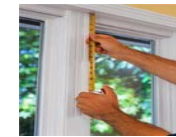
1 2 3 4 5 6 7 8 9 10 N/A
Comments:

6 Hammer Remodeling Fumes (Purifier-High / Fan-High)

This procedure can help reduce and eliminate those hazardous toxic fumes and dust created in your home after you paint, lay carpeting, install cabinetry, or almost any remodeling! This step can provide amazing results and is worth recommending to family and friends who are also remodeling or building.

- Place your Purifier in the center most area of the room about 5 to 6 feet above the floor.
- Turn your Purifier "On" with the Fan set on High. Set the Square Feet to the maximum setting.
- Place an additional fan in the room to circulate the Activated Oxygen to every corner of the room if the airflow is limited in the room.
- If off-gassing from materials is high you may consider vacating the area. Allow this setup to run for 4 to 24 hours, or longer, depending on the level of the odor. It is often best to vacate the room while the activated oxygen works to eliminate the chemicals.

Note: Always Keep in mind that the Activated Oxygen (O3) in higher concentrations is for purging purposes only and not necessary for continuous use. With the purifying setting on "high", you are purifying like a thunderstorm with lightning. On lower settings you are maintaining a daily purification process just like the sun. It's nature's way!



Rate your Results!

"1" means no improvement and "10" means problems ELIMINATED. N/ A means you skipped process.

1 2 3 4 5 6 7 8 9 10 N/A
Comments

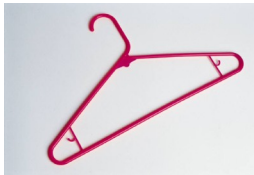
5 Spring Clean the Closet

(Purifier-High / Fan-High)

This step can help you reduce or eliminate that stale, musty smell from all of your closets and storage units.

- Place your Purifier in the center of the closet or storage space up as high as you can get it. If you're just freshening up a small item like a chest or trunk, lower the lid to within 3 inches of being fully closed. You must allow some fresh air in for your Purifier to work the maximum.
- Turn your Purifier "On" with the Fan set on "High". Turn the Square Feet setting to the maximum setting. the cord as you close the door.
- Allow this setup to run for 1 to 3 hours depending on how full your closet or the size of the storage area, Its OK to run it all day.

Note: For smelly shoes or a smoke drenched jacket: Place in front of purifier on a "high" setting for an extra hour or so.



Rate your Results!

"1" means no improvement and "10" means problems ELIMINATED. N/ A means you skipped process.

1 2 3 4 5 6 7 8 9 10 N/A
Comments

2 Breathing Easy in the Bedroom

(Purifier-High / Fan-High)

This step won't take long and has the potential to give you the best night's sleep ever!



- Simply pull back the blankets and cover to expose the mattress and pillows.
- Set the mad-Line on the foot of your bed and pointed toward the head.
- Turn your Purifier "On" with the Fan set on "High". Set the Square Feet setting to the maximum.
- Cover the Purifier and your whole bed with a light sheet to make a "tent" over everything except the back of the purifier (*so it can breathe*). This will concentrate the Activated Oxygen deep into your bedding to oxidize odors and reduce the irritation from unseen particles such as dust mite excretion in our beds. This procedure can benefit your breathing and thus increase your ability to get a good night sleep.
- Make sure to keep the back of your Purifier clear. The Purifier must be able to draw air through it to produce Activated Oxygen properly
- Finally close the door to the room and allow the Purifier to disinfect the bed for 1 to 3 hours or all day while you're away. Then walk into a purified bedroom and remove the setup.

Note: You may be tempted to sleep with the unit in your room. However, that is not recommended once the room is sanitized. You will normally have a smaller amount of O3 concentrations with the purifier when it is placed in its "home place" such as a main living area and allowed to circulate throughout the house. The higher concentration in the bedroom is not necessary on a regular basis and those who are sensitive may find it uncomfortable.

Rate your Results!

"1" means no improvement and "10" means problems ELIMINATED. N/ A means you skipped process.

1 2 3 4 5 6 7 8 9 10 N/A
Comments:

#3 Mold Blast Basement/Garage

(Purifier-High / Fan-High)

This step will pleasantly surprise you as the smell from the unsanitary mold and mildew in the basement / garage becomes transformed into a sweet smelling place to spend time. Please note that you may have to run a dehumidifier if the basement environment is really damp. Mold and mildew love dampness. However, the purifier can handle most basements without a dehumidifier.

- Place your Purifier in the center of the basement about 5 to 6 feet above the floor if possible. Higher is better.
- Turn your Purifier "On" with the Fan set on "High". Set the Square Feet setting to the maximum. Place an additional fan in the room if necessary to circulate the Activated Oxygen to every corner of the basement if the airflow in the basement is limited.
- Allow the purifier up to run for 6 to 8 hours for mild/ moderate problems. Allow it to operate from 2 to 4 days if you have a serious problem basement. **Remember, According to Experts, if you can smell the mold or mildew, you could be at risk! So lets remove odors and significantly reduce dangerous mold!!!**

Note: For severely infected or damp areas consider a second purifier. Also remember: When you have the Fresco Square Feet setting on "High" it is for purging purposes. When oxidizing mold you will normally smell a "detergent" like odor resembling chlorine which creates a reduction or "breakthrough" of the mold.



Rate your Results!

"1" means no improvement and "10" means problems ELIMINATED. N/ A means you skipped process.

1 2 3 4 5 6 7 8 9 10 N/A
Comments

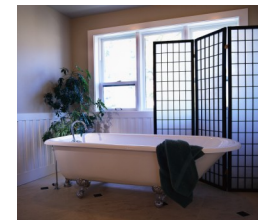
#4 Flush Your Bathroom

(Purifier-High / Fan-High)

This step can help reduce mold and mildew and other odors. It will help you keep those smelly microorgan-isms from taking over your bathroom!

- Place your Purifier in the center of the bathroom about 5 to 6 feet above the floor.
- Turn the Purifier "On" with the Fan set on "High". Turn the Square Feet setting on your Purifier to the maximum setting.
- Allow the unit to run for 2 to 4 hours.
- This procedure should be repeated at least once per month to help maintain a healthy mold-free bathroom in addition to your regular cleaning.

Also keep in mind that when you have the Fresco purifier setting on "high" it is for purging purposes only. When oxidizing mold you will normally smell a "deter-gent" like odor resembling chlorine, which creates a "breakthrough" or reduction of the mold. However, the machine does not produce chlorine, only Activated Oxygen and ionization. This is the same Natural process the sun and a thunderstorm produces to clean up the outdoor air pollution.



Rate your Results!

"1" means no improvement and "10" means problems ELIMINATED. N/ A means you skipped process.

1 2 3 4 5 6 7 8 9 10 N/A
Comments: